

GIS SERVICES OVERVIEW



Entellus is a recognized leader in utilizing geospatial technologies to create engineering solutions. Our reputation for success is founded on providing innovative solutions for our clients. In today's fast-paced world, utilizing the power of geospatial information is fundamental to enhancing the decision-making process. Our experienced staff of more than 60 professional consultants, analysts, and planners has a complete understanding of integrating this information with cutting-edge technology for the clients we serve.

Entellus' GIS Services employs constantly evolving technology and modeling techniques to meet today's planning, engineering and environmental challenges. Using a project team approach, we are able to select from a diverse portfolio of services detailed below. We deliver smart, innovative and cost-effective solutions in a timely fashion.

- ✓ Land Use and Zoning
- ✓ Digital Cartography
- ✓ Thematic Mapping
- ✓ Data Collection/ Facilities
- ✓ Inventory
- ✓ Data Capture
- ✓ Data Acquisition
- ✓ Aerial and Satellite Image Acquisition
- ✓ Suitability Analysis/Site
- ✓ Selection
- ✓ Topographic Mapping
- ✓ Watershed Analysis, Hydrology, Hydraulics
- ✓ GIS Custom Data Analysis and Data Processing Tools
- ✓ 3-D Visualization
- ✓ Visualizations



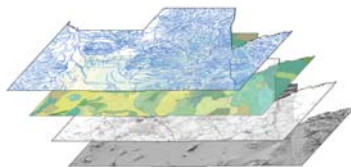
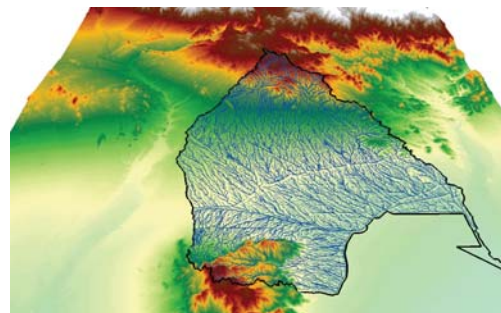
3D Visualizations



REPRESENTATIVE PROJECTS:

Wittmann Area Drainage Master Study Update (Maricopa County, AZ)

- 312-Square Miles Watershed
- Multi-Jurisdictional Coordination
- Existing Conditions Evaluation
- WMS for "Quick" Prioritization
- GIS for Managing Information
- 150 Miles of Delineation
- Rules of Development
- Alternative Analysis
- GIS Data on Demand Per Public Information



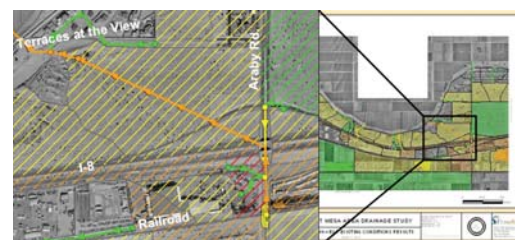
County Wide Area Drainage Master Plan (Pinal County, AZ)

5,386 Square Miles

- Collection of GPS field data for presentation in GIS
- Enabling of GIS information for digital distribution
- GIS Hydrologic Data Analysis and Processing for Automated Hazard Identification
- Layering of many data types to develop complex evaluation of conditions
- Coordination of GIS information with other applications

East Mesa Drainage Master Plan (Yuma County, AZ)

- 20-Square Miles Watershed
- Similar Jurisdictional Concerns
- From Farm-Rural to Urban
- Existing Conditions Evaluation
- GIS Hydrologic Data Generation, Processing and Analysis
- Extensive GIS for Managing Information
- CIP Program Recommendations
- Rules of Development



ENTELLUS PHILOSOPHY AND APPROACH

Entellus' goal is to provide services that are both cost-effective and timely through intelligent engineering and proactive environmental solutions. To achieve our goal, we offer a high level of reliability, technical excellence, and responsiveness. We are committed to work as a team with our clients to build valued long-term relationships.



Data Collection

Entellus has been successfully involved in the analysis, planning, design, and construction administration of transportation projects in Arizona. Entellus offers our clients a complete range of civil engineering services from design through inspection. We are experienced in the unique dynamic of maximizing the end user's satisfaction while keeping a strong focus on our clients' objective of minimizing costs and time to market.

We accomplish this by focusing on three principals:

- ◀ We communicate with the appropriate agencies and ultimate facility owners early in the project. Then we maintain that critical line of communication.
- ◀ We communicate with the client. We do this often, openly, and with proactive suggestions.
- ◀ We assign Key Personnel with significant experience providing services to private sector clients.

ENTELLUS CORE PURPOSE:

To provide solutions that have a positive impact on our community, the world and the way in which people live, work and play.



Contact:
Chris Christensen, GISP
Director of Transportation
cchristensen@entellus.com



OTHER TECHNICAL SERVICES:

Hydrology & Surface Water

Water/Wastewater Services

Transportation Services

Development Services

Airport Services

Funding